

DISASSEMBLY

HINT:

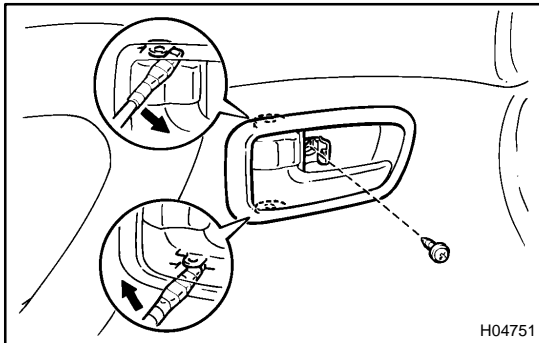
A bolt without a torque specification is shown in the standard bolt chart (see page [SS-2](#)).

1. REMOVE DOOR INSIDE BEZEL

- (a) Using a screwdriver, open the cover.

HINT:

Tape the screwdriver tip before use.



- (b) Remove the screw.

- (c) Using a screwdriver, remove the door inside bezel, as shown in the illustration.

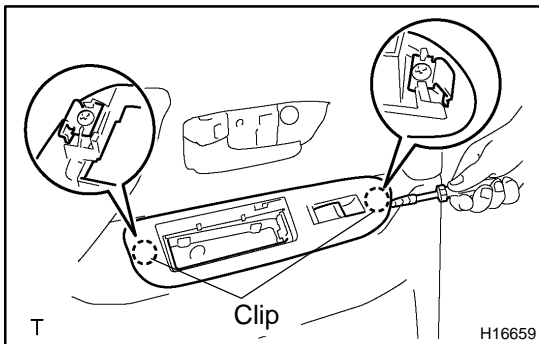
HINT:

Tape the screwdriver tip before use.

2. REMOVE COURTESY LIGHT

3. REMOVE REAR ARMREST BASE PANEL UPPER

- (a) Remove the rear ash receptacle.



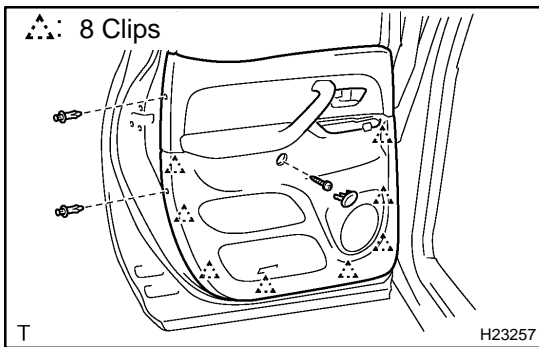
- (b) Using a screwdriver, remove the rear armrest base panel upper together with the power window switch.

HINT:

Tape the screwdriver tip before use.

- (c) Disconnect the connector.

- (d) Remove the power window switch from the rear armrest base panel upper.



4. REMOVE REAR DOOR TRIM PANEL

- (a) Using a screwdriver, remove the cap.

HINT:

Tape the screwdriver tip before use.

- (b) Remove the screw and 2 clips.

- (c) Insert a screwdriver between the rear door trim panel and door panel to remove the rear door trim panel.

HINT:

Tape the screwdriver tip before use.

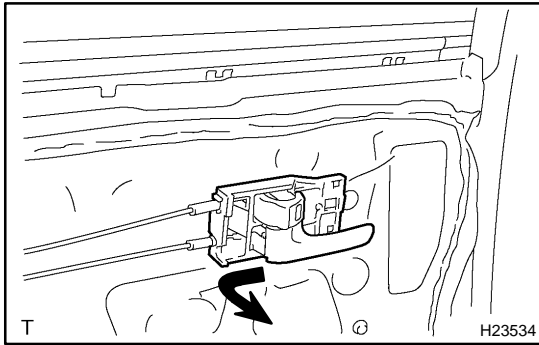
- (d) Pull the rear door trim panel upward to remove the rear door trim panel.

- (e) Remove the rear door weatherstrip inner from the rear door trim panel.

5. REMOVE SPEAKER

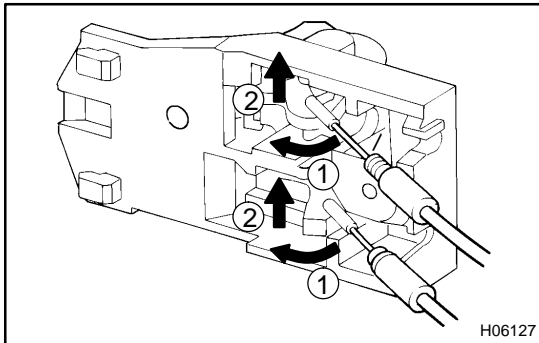
- (a) Disconnect the connector.

- (b) Remove the 3 screws and speaker.



6. REMOVE REAR DOOR INSIDE HANDLE

- (a) Slide the rear door inside handle backward to remove it.



- (b) Disconnect the 2 cables from the rear door inside handle, as shown in the illustration.

7. REMOVE REAR DOOR SERVICE HOLE COVER

- (a) Using a clip remover, remove the clamp and grommets.
(b) Remove the rear door service hole cover.

NOTICE:

Do not tear the rear door service hole cover.

8. REMOVE REAR DOOR GLASS

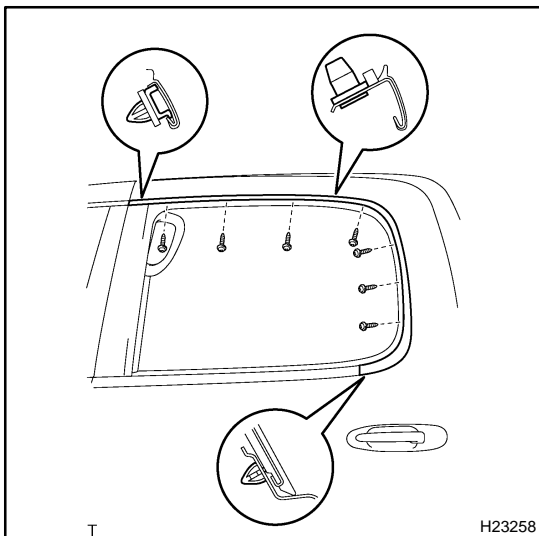
- (a) Open the rear door glass until the bolts appear in the service hole.
(b) Remove the 2 bolts.

NOTICE:

Do not damage the door glass.

- (c) Pull the rear door glass upward to remove it.

9. REMOVE REAR DOOR GLASS RUN

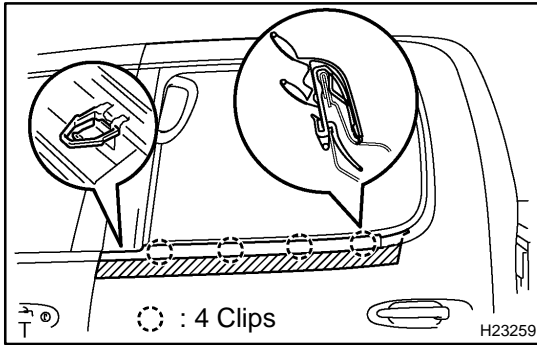


10. REMOVE REAR DOOR WINDOW FRAME MOULDING UPPER

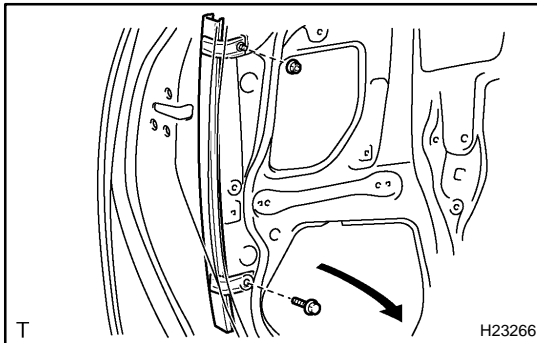
- (a) Remove the 7 screws.
(b) Using a screwdriver or clip remover, remove the rear door window frame moulding upper.

HINT:

Tape the screwdriver tip before use.

**11. REMOVE REAR DOOR BELT MOULDING**

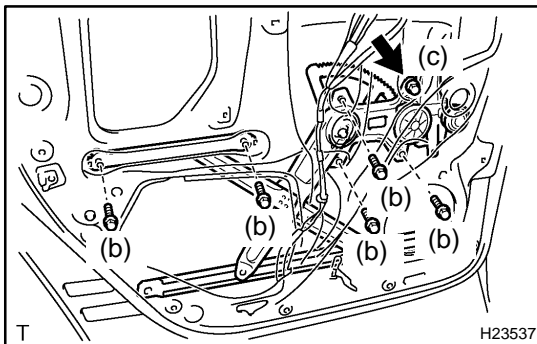
- (a) Apply protective tape to the outer surface, as shown in the illustration, to prevent the vehicle surface from being scratched.
- (b) Using a moulding remover, remove the rear door belt moulding.

**12. REMOVE REAR DOOR WINDOW FRAME REAR LOWER**

Remove the bolt, nut and rear door window frame rear lower, as shown in the illustration.

HINT:

Remove the rear door window frame rear lower through the service hole.

**13. REMOVE REAR DOOR POWER WINDOW REGULATOR**

- (a) Disconnect the connector.
- (b) Remove the 5 bolts.
- (c) Loosen the bolt, and remove the rear door power window regulator.

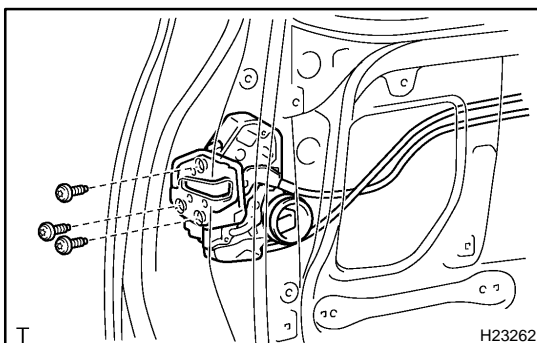
HINT:

Remove the rear door power window regulator through the service hole.

- (d) Remove the 3 screws and power window regulator motor from the rear door power window regulator.

14. REMOVE REAR DOOR LOCK

- (a) Disconnect the 2 control cables from the clamp.
- (b) Remove the clamp.
- (c) Disconnect the connector.



- (d) Using a torx® socket wrench, remove the 3 torx® screws.
Torx® socket wrench:
T30 (Part No. 09042-00010 or locally manufactured tool)

- (e) Remove the rear door lock.

HINT:

Remove the rear door lock through the service hole.

15. REMOVE REAR DOOR OUTSIDE HANDLE

Remove the 2 bolts and rear door outside handle.

16. REMOVE REAR DOOR WEATHERSTRIP

Using a clip remover, remove the rear door weatherstrip.

17. REMOVE REAR DOOR WEATHERSTRIP NO. 2